

# ATTIC-TRAX™ ILLUMINATED WALKBOARDS



Attic-Trax™ Illuminated Walkboards are used to assist techs in traversing safely through an attic space while performing functions such as wiring, inspections, equipment installations, pest control, etc.

They are lightweight yet sturdy, and easy to maneuver. Each unit includes a convenient shoulder strap to ensure 3 points of contact to be maintained while ascending and descending attics, stairwells and more.

Low light conditions and power outages in the workplace increase health and safety hazards. Using Attic-Trax™ can save you and your employees a lot of hardship. The Attic-Trax™ *Illuminated* comes with a rechargeable light affixed underneath.

## FEATURES:

- 500 lb. load rating
- Adjustable light Brightness
- Made from lightweight polymer
- Service temperature range: -40F to 180F
- Works in attics with 16" or 24" OC joist spacing
- Two 18" x 26" work surfaces per set
- High Visibility handles
- Non-Slip Surface
- Long Lasting Battery Life (see p.2)
- Traction studs at all 4 corners
- 3100mAh capacity battery
- Comes with TYPE C charging cable
- Shoulder Strap included with all ATI purchases.
- Warm and Cold Bi-color temperature light options



*PICTURES SHOWN SHOT AT 50% BRIGHTNESS*



# U-TECK™

Your Safety... Our Solutions.

## Ordering Information

**DESCRIPTION:** ATTIC-TRAX ILLUMINATED  
WALKBOARD KIT (2) 18" X 26"

**PRODUCT #:** 62028-L  
**WEIGHT:** 7LBS EA. 14LB SET

# ATTIC-TRAX *ILLUMINATED* GUIDE



*The intensity of the light can be adjusted.*

## Battery Life: 100% to 10%

☀️ 100% BRIGHTNESS - 2.5 HR BATTERY LIFE 75%

☀️ BRIGHTNESS - 3.5 HR BATTERY LIFE 50%

☀️ BRIGHTNESS - 5 HR BATTERY LIFE 25%

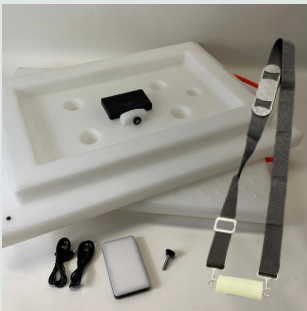
☀️ BRIGHTNESS - 6 HR BATTERY LIFE 10%

☀️ BRIGHTNESS - 9.5 HR BATTERY LIFE

Charging time may vary between 1-2hrs

\*Charger type will effect charging time

# ATTIC-TRAX *ILLUMINATED* INSTRUCTIONS



You will receive the parts shown with your Attic-Trax Illuminated Kit



The Light attaches on bottom using the closed Thumb Screw



Power on using the switch



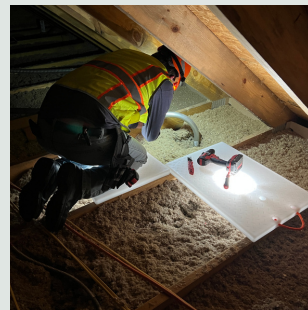
Brightness and color temperature are adjustable using the dials on the side



Using HI-VIS handles for transport, position and stand on one unit.



Position the next board at a comfortable distance. Step onto that board.



Pick up and reposition the board you just vacated. Repeat.



To charge, simply connect to the included charger into the USB-C port