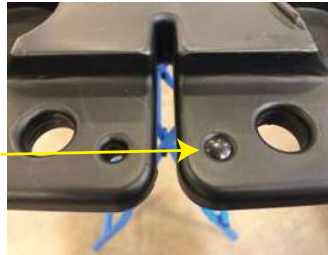


## Securing your splicing machine to the worksurface.



Remove Black Cap from center of the worksurface and store cap in this locations by pushing into place.



Captive Knob is located on the underside of the worksurface. Screw knob threads into the bottom of your splicing machine, careful not to overtighten.



Splicing Machine is now secured to the Worksurface for aerial or bucket use.

*NOTE: Most Splicing Machines commonly use a 1/4"-20 Thread. Captive knobs in 3/8"-16, M6, or M8 are also available.*

**U-TECK**  
Your Safety... Our Solutions.

P.O. Box 2484, Fayetteville, North Carolina 28302  
(800) 542-7011 • Fax: (910) 483-0784  
UTECK.com

**U-TECK™**

Your Safety... Our Solutions.

## Fiber Optic Splicing Workstation Assembly Instructions



- 1) Unpack your new Fiber Optic Splicing Workstation.
- 2) There are 2 height locations of the bottom of the worksurface. 31" to 40". Choose your desired height and attach as follows.
- 3) Open up the blue stand, placing all four legs on the ground. The adjustment strap across the top is pre-set, allowing the stand to open the distance necessary for correct table top placement.



Fig. A

- 4) Align the molded leg channels underneath the table top with the top of the leg stand.



Fig. B

- 5) Push down firmly on all four corners to lock in place.



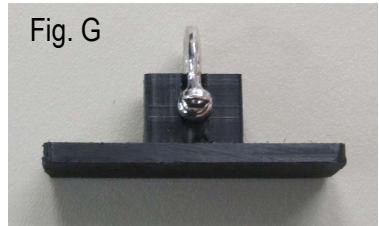
Fig. C

- 6) Detach and rotate top to change height.

- 5) Below shows the table top locking clip (Fig. D). There are a total of two, one on either side of the table.
- Place locking clip into the groove on the side of the tabletop. (Fig. D)
  - Slide into the groove completely. (Fig. E)
  - Give a quick push underneath the locking clip to ensure it is securely fastened. (Fig. F)
  - Repeat on opposite side.



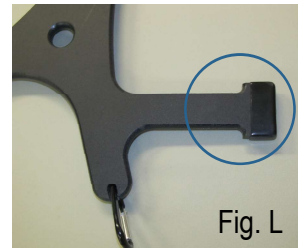
- 6) Fig. G is a support block. There are a total of four support blocks per table to allow you to attach the wall stand-offs.
- Slide the support block into the pre-molded groove on top corner of table top. (Fig. H)
  - Push until it is completely seated. (Fig. I)
  - Repeat process on all four corners.



- 7) If you ordered the Fiber Optic Splicing Workstation with wall stand-offs, you should have a total of two stand-offs connected by heavy duty mesh strap. (Fig. K)

The coated arm should be facing away from the back of your table top and should rest against the wall. (Fig. L)

Fig. K



- 8) Attach carabiner to the support block as shown in Fig. M.

Repeat on all four corners. (Fig. N)



- 9) The Cable Management Bracket (Fig. O) can be attached on either end of the workstation to make organizing the buffer tubes easier.

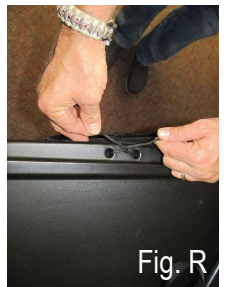


- 10) Remove leg stand and you are now ready to hang your Workstation. The adjustable strap may position the work surface to the desired height.

\* The workstation is self-leveling and should only be hung by an object capable of supporting the workstation while in operation. (Fig. P)



- 11) If you purchased the Black Poly-Mesh 3-Pocket Pouch, a handy place to hang is from the front of the Workstation. (Fig. Q and Fig. R)



### Storing the Fiber Optic Splicing Workstation

It's easy to pack up and head out with the Fiber Optic Splicing Workstation.

1. Remove the table top
2. Fold up legs
3. Place table top on its side
4. Re-attach two legs

Now you can just grab it and go!

