

FIBER DROP CADDY

Are you or your Techs having a difficult time walking out Fiber Drops? Are your longer drop lines difficult to manage because they tend to 'spring' back? Introducing the solution to your problems! The ALL NEW Fiber Drop Caddy!

Features:

- Fiber coil easily attaches to caddy with just ONE carabiner (included) OR zip ties (not included).
- Can handle up to 1500' fiber drops!
- Lightweight.
- Easy to Store.
- Fits multiple coil diameters from different manufacturers.

U-TECK's Fiber Drop Caddy is designed to hold and manage Fiber Drop Hand Coils. This caddy is adjustable to accommodate various inside diameters of coils from different manufacturers. The removable spool can be easily adjusted by removing the thumb screws, sliding the (six) black spacers within the yellow spool sides to the desired location, and reinserting the thumb screws.

An empty caddy weighs 28lbs and weighs 51lbs holding a 1000' drop.

The weight keeps the caddy stable and in place while paying out fiber drop.

This caddy can also be used to pay out fiber coils, wire, or pull tape, that are already on a core with a 1.25" inside diameter and a 5.25" wide width, by using the spindle only.



Ordering Information

Item Description:
FIBER DROP CADDY

VPN:
59016

MID:
11381531

U-TECK™
Your Safety... Our Solutions.

159 Rock Hill Rd, Fayetteville,
North Carolina 28312
(800) 542-7011 / UTECK.COM

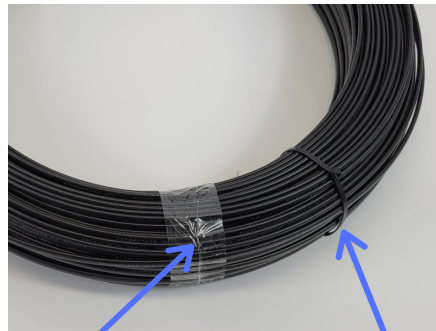


Your Safety... Our Solutions.

FIBER DROP CADDY INSTRUCTIONS



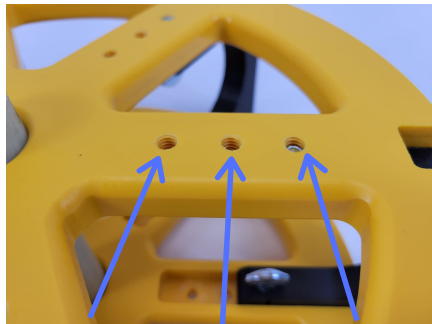
Remove spool from caddy frame by sliding the spool assembly from the frame.



DO NOT remove the ties or plastic packaging until the coil is attached to the caddy and ready to use!



Determine the inside diameter of the fiber cable to be used.



12.75"DIA 14.5"DIA 16"DIA
There are 3 predetermined positions to which the spool can be adjusted.



Slide the spacers to the desired spool diameter by removing the thumb screws and reinserting in the desired position.



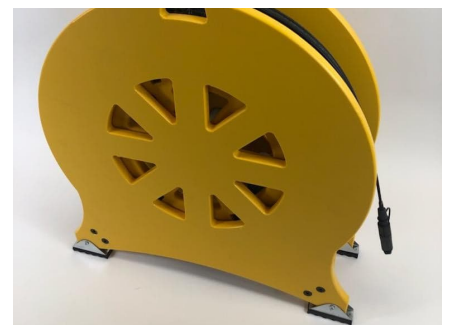
Attach the inside of the coil to the spool by using the carabiner (included) OR tie wraps (not included).



Reinsert the loaded spool into the caddy frame.



The payout direction is indicated inside the frame.



U-TECK recommends positioning the caddy on a fairly level surface while in use. However the pivoting feet do allow for it to be used on some uneven surfaces.

www.UTECK.com / 1-800-542-7011
Info@UTECK.com