

MOUNTING BRACKETS & SUPPORT CLAMPS

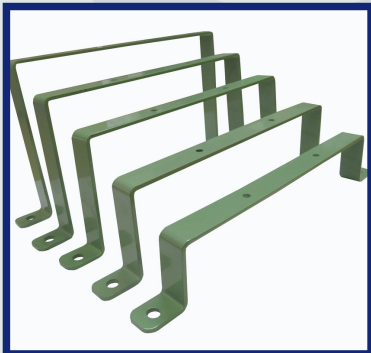


HANGER BRACKETS
Aluminum hanger brackets for mounting a wide variety of copper, coax, or fiber optics cable terminals and splice cases on building walls or on poles.

3.5" x 22"	VPN: UT-T556-5
3.5" x 27.5"	VPN: UT-T556-1
3.5" x 33"	VPN: UT-T556-2
3.5" x 40"	VPN: UT-T556-4
5.5" x 40"	VPN: UT-T556-3

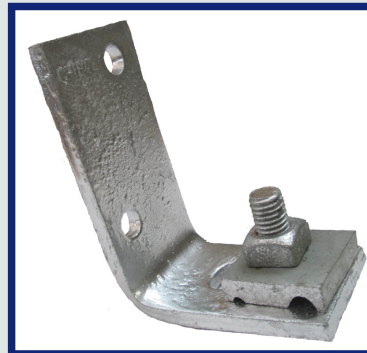


E WALL BRACKET
The E Wall Bracket is used in conjunction with a one-bolt guy clamp for supporting strand on exterior walls where more than 3" of clearance is required between cable and wall. Bracket provides a clearance of 8".
VPN: UT-T639-3



WALL MOUNTING BRACKETS
Insure fast and secure placement of MC 12/40, CAD-12, and NCAD-12 closures on finished exterior walls. Various lengths allow proper stand off distance to clear obstructions. Galvanized steel, painted to match closure.

MC10/48 1"	VPN: UT-T484-1
MC10/48 2"	VPN: UT-T484-2
MC10/48 3"	VPN: UT-T484-3
MC10/48 4"	VPN: UT-T484-4
MC10/48 5"	VPN: UT-T484-5
MC10/48 6"	VPN: UT-T484-6



S WALL BRACKET
The S Wall Bracket is used to support strand on interior walls of either frame or masonry construction. Provide a 2" stand off from the wall.

VPN: UT-T639-4



HARDWARE MOUNTING FOR FIBER SNOWSHOE

4" The Fiber Snowshoe is used to secure a tap or other electronic device to a strand. This product includes a bracket, set of mating jaws, a carriage bolt, and square nut.

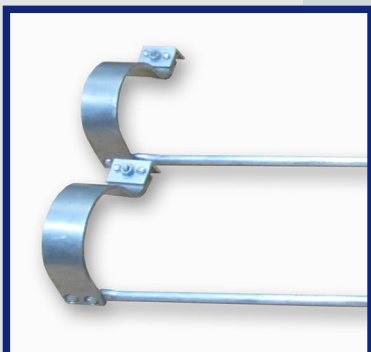
VPN: UT-U500-1



INSULATOR SUPPORT CLAMPS

Used in conjunction with cable clamps, one-bolt guy clamps, and bridle rings for attaching to structural steel members such as H or I beams. Provides bonding point for mobile homes, trailers, etc. (10 pack)

B CLAMP VPN: UT-B1420
C CLAMP VPN: UT-C3816



AERIAL STRAND HANGER BRACKETS

Designed to support aerial closures and terminals when more than one aerial cable is carried by the strand. The bracket clamps to the strand, circles around the upper cable, and provides a strand-like rod to which the aerial closure may be attached. No complex adapters or special tools required.

37" Bracket VPN: UT-T556-21
40" Bracket VPN: UT-T556-22



C BEAM CLAMP

The C Beam Clamp is used for intermediate attachments of strand to the flange of a structural steel member. (10 pack)

VPN: UT-T5887