

SPLICER SEAT



U-TECK has combined a longtime, craft-accepted design with a new polyethylene material to produce a rugged splicer seat that can be warranted for up to five years.

With the U-TECK Splicer Seat, there is never a need for water treatment because it is waterproof. No need for painting, either; the color is molded into the seat. And no worries about splintering. It is ouchless! This seat can be drilled to attach other equipment, such as splicing machines.

Features:

- Extremely rugged
- Convenient tool slot
- Traditional design
- Large sitting area
- Polyethylene material
- Textured surface
- Five-year warranty
- Available in grey & safety orange

U-TECK has even included a handy tool slot in the top to hold your tools, connectors, or other small items when you need them close at hand.

Conventional splicing machines can be attached to the Splicer Seat. The unique design of the seat allows it to be used at three different positions for varied heights. The Splicer Seat also makes an excellent footstool. With this seat, you will never need to purchase a replacement again.

Separate the work surface from the stand and quickly attach the two unique stand-off props with adjustable webbing into the 4 accessory slots and you can take your work table to new heights, giving you a secure and level work surface when hanging it over terminal casings inside data rooms, closets, and outdoors against a wall for wall-mounted ONT's or NID's.



U-TECK™

Your Safety... Our Solutions.

159 Rock Hill Rd, Fayetteville, North Carolina 28312

(800) 542-7011 / UTECK.COM

Ordering Information

Description:	Product #:	Dimensions:	Weight:
Grey "P" Splicer Seat	55430	18"L x 14.75"W x 11.75"H	10LBS
Orange "P" Splicer Seat	55430-OR	18"L x 14.75"W x 11.75"H	10LBS

Fiber Optic Splicing WorkStation

Accessories



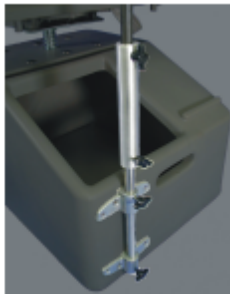
MS2 Splicer Adapter

Fits on your MS2 splicing tool to easily attach and remove it from the Splicer Seat.



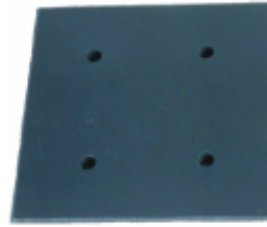
Seat Cushion

Thickly padded cushion in a weather-resistant cover. Comes complete with three large pockets for tools and materials.



Universal Splicing Head Adapter

Used to temporarily attach either a 710 or MS2 splicing machine to the Ergonomic Seat or the "P" Splicer Seat. Can be mounted in several locations as desired by individual splicers.



Tool Base Adapter

Assists you when permanently attaching your 710 splicing tool to the Splicer Seat.

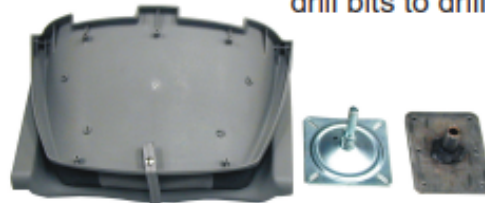


Splicing Mat

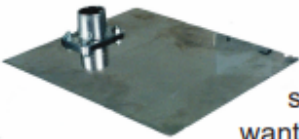
3 ft. x 4 ft. rugged, washable, reusable pad that covers the work area. Keep your jelly-filled cable out of the dirt, and you and your tools out of the mud and weeds.

Retro Fit Kit

Allows the upgrade from the Splicer Seat to the Ergonomic Seat. Includes the splicer seat adapter, the Ergonomic Seat, and even the drill bits to drill the holes.



Splicing Arm Base



Fits under your Splicer Seat to attach your modular splicing tool when you do not want to attach it directly to the Seat.



710 Splice Adapter

Fits on your 710 modular splicing tool to easily attach and remove it from the Splicer Seat.

Ordering Information

Description	Product Number	Packaging	Weight
MS2 Splice Adapter	55420	1 each	2 lbs.
710 Splice Adapter	55500	1 each	1 lbs.
Tool Base Adapter	55450	1 each	1 lbs.
Seat Cushion	55430-CU-BLK	1 each	1 lbs.
Splicing Mat	55430-MAT	1 each	3 lbs.
Splicing Arm Base	55430-BASE	1 each	6 lbs.
Universal Splice Adapter	55460	1 each	16 lbs.
Retro Fit Kit	55430-RETROKIT	1 each	2 lbs.